

Seed Copilot

Quick Start Guide

Your AI assistant for smarter,
faster decisions.



1. Introduction: What is Copilot?

Seed Copilot is your built-in assistant in Seed that helps you reach the insights you already track – faster. It connects directly to your Seed data, including sales, routes, products, and margins, and returns clear tables and charts so you can see what's driving your business at a glance.

2. How to use Copilot



Check that your Admin has turned on Copilot permissions.



In Seed, navigate to the Reports dropdown and select Copilot.



Type a question in plain language—use one of the examples below or try your own.



Review your results to see your data summarized.



3. Try your first question

EXAMPLE:

You ask:

"What were my total sales last month by route?"

Copilot shows:

A table summarizing your total revenue and top routes.

Next Step:

Review your results to see which routes performed best.

4. Common questions Copilot can answer

Ask Anything That Helps You Run Smarter

Copilot can answer a wide variety of questions about your sales, products, routes, and inventory. Try these ready-made questions to get started.

Understand Performance

"Show total vending sales by route for last quarter."

"Show my top 10 vending machines by total revenue last month."

"Show a line graph of my total micro market sales for the last 6 months."

Why it helps: Quickly see where your business performs best and where to focus improvements.

Manage Products

"What were my 10 best-selling products last month?"

"Which product categories generated the most revenue last month?"

"Which products had the most spoilage last month?"

Why it helps: Know exactly which products to prioritize and where to adjust your lineup.



Protect Profits

"List products with negative profit last month in micro markets."

"Which vending products had the most bring backs last month?"

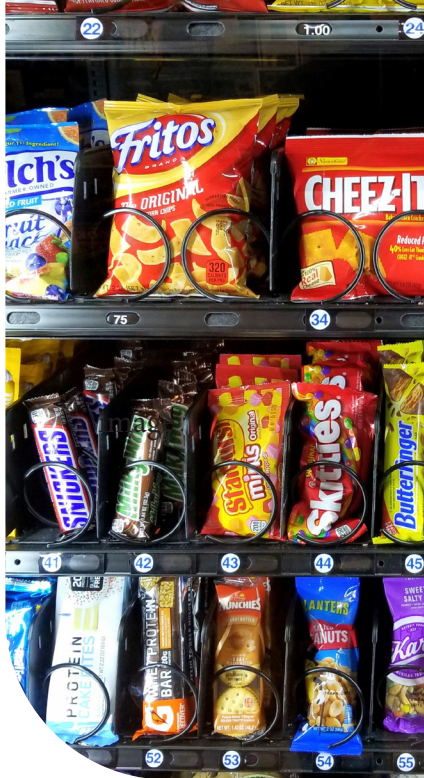
Why it helps: Catch unprofitable SKUs early and see where products perform best.

Spot Patterns

"Compare weekday versus weekend sales for micro markets in Sept 2025."

"What was the change in warehouse inventory from March to April?"

Why it helps: Understand when and where customers buy so you can plan staffing and restocks effectively.



5. Practical tips for best results



Do:

Start simple—one metric, one time frame.

Use clear verbs like show, list, or compare.

Specify a period such as "last month" or "Q3 2025."

Add "top 10" or "bottom 5" to focus large data sets.



Avoid:

Multi-period comparisons (e.g., "Compare 2024 vs 2025").

Thresholds or formulas (e.g., "Under \$25/day," "10% drop").

Data fields when they appear as "0" (e.g., Markets questions when not using Seed Markets).



Tip:

If Copilot shows an error, simplify your question or narrow your time range.



6. FAQ & SUPPORT

Where does Copilot get its data?

From your Seed environment—including sales, routes, locations, products, and margins.

Can Copilot edit or change my data?

No. It only reads and summarizes existing data.

How accurate are results?

They reflect your live Seed data. Always double-check key figures before making changes.

What if I get an error?

Simplify your question or add a clear time range.

Need help or want to share feedback?

Use the feedback option in Copilot or contact Cantaloupe Support.





cantaloupe

Cantaloupe | Seed Copilot

Visit cantaloupe.com to learn more about
Copilot and other Seed features.